

DUBLIN • IRELAND

ENGLISH

for TRAVEL for BUSINESS for LIFE

#academicbridge

METHODOLOGY

The best way to
have a consistent
learning experience

FIND OUT

WHY
ACADEMIC
BRIDGE IS
THE BEST
OPTION TO
STUDY
ENGLISH
IN IRELAND

WWW.ACADEMICBRIDGE.IE



33 GARDINER PLACE
DUBLIN 1 • IRELAND
info@academicbridge.ie
+353 1 878 8616



CONTENTS

- 04 MISSION AND VISION
- 06 LOCATION
- 08 ACADEMIC BRIDGE FACILITIES
- 10 ACCOMMODATION / STUDENT SERVICES
- 12 EXTRA ACTIVITIES
- 14 TRACK YOUR PROGRESS
- 16 COURSE S
- 18 EXAM PREPARATION 15h / 30h
- 20 METHODOLOGY
- 22 CONTACT US
- 24 INDUCTION DAY
- 26 HOW TO APPLY
- 28 ACCREDITATIONS
- 30 STUDENT TESTIMONIALS


WELCOME TO ACADEMIC BRIDGE

Academic Bridge is pleased to welcome you to our English language courses in the heart of Dublin city centre. During your stay with us here in Dublin, we hope that you enjoy yourselves and make lots of new friends, but most importantly that you improve your English.

As part of your course, we recommend that you sign up for our social activities, fellow students from other countries, different levels of English, learn more about Ireland and get to see new places.

We pride ourselves on our service and aim to ensure that your stay here in Ireland is to your satisfaction. However, should you experience any difficulties please do not hesitate to contact us here at school.

AB



Our **MISSION** is to deliver high-quality English language courses in a friendly, stimulating and supportive atmosphere with qualified and enthusiastic teachers.

VISION As a school we aim to become the best and most memorable chain of English schools around the globe. We strive to achieve this by providing an unforgettable learning experience for students and deliver the best customer service on the market. Students' satisfaction and wellbeing are our priorities.

ABOUT IRELAND

Ireland is an island situated in the most westerly point in Europe, sandwiched between the Atlantic Ocean to the west, and the Irish Sea to the east.

The island of Ireland consists of 26 counties of the Republic of Ireland, and 6 counties of Northern Ireland, which is part of the United Kingdom. The Republic and Northern Ireland amount to one continuous landmass.

The Irish language is the official first language of the state, although the majority of Irish people speak English as their first language. There are still pockets of Irish speaking areas, called Gaeltachts, mainly along the western seaboard and the southwest, but there are still some communities remaining that are monolingual in Irish alone. All road signs and official documents are written in both Irish and English.

ABOUT DUBLIN

Dublin is one of Europe's oldest cities. It is the capital city and the largest city in Ireland. As well as retaining its historical and cultural charm, Dublin offers trendy bars, elegant restaurants and stylish, cosmopolitan shops and hotels. So not only have you chosen the best school in which to learn English, you have also chosen the best city.

ACADEMIC BRIDGE LOCATION

Academic Bridge is located in an elegant Georgian building in one of Dublin's historic areas, a short walk from O'Connell Street, the main street in Dublin city centre. Address:

33 GARDINER PLACE, DUBLIN 1, DUBLIN - IRELAND

11 HARCOURT STREET, DUBLIN 2, DUBLIN - IRELAND



“With great support,
an awesome
lounge room, huge
back-yard for events and
fun classes as always!”



ACADEMIC BRIDGE

FACILITIES

Our schools have bright and comfortable classrooms, free wi-fi connection for students, reception areas, student lounges with access to computers and free books and a canteen.

Our classrooms are equipped with whiteboards, monitors and audio systems and provide for a dynamic language learning experience combined with interactive and communicative activities led by our creative teachers.

- SPACIOUS CLASSROOMS
- SELF-ACCESS QUIET STUDY AREA
- MODERN MULTI-MEDIA COMPUTER SUITE WITH FREE INTERNET ACCESS
- FREE WI-FI
- CANTEEN
- CLUBS INCLUDING DRAMA, MUSIC, MOVIES, IRISH CULTURE AND VIDEO PRODUCTION
- LARGE OUTDOOR EVENTS AND CELEBRATIONS AREA





ACCOMMODATION

• ACCOMMODATION OPTIONS

With this option you will have the comfort and friendly atmosphere of a host family as well as fun and independence similar to a hostel. You can cook your own food or have someone prepare it for you.

• STUDENT RESIDENCE

You will have the benefit of living with other people like you, who are studying English. This is the best option for you if you want total immersion in the student experience. Available all year round.

• HOSTEL

We suggest a variety of hostels close to the school. Shared rooms, shared kitchens and a shared TV area make this option a good social place to stay. This is best for you if you want to mix with lots of different nationalities. Available all year round.



STUDENT SERVICES

- Social activities
- Internship programme
- Airport pickup
- Health insurance
- 24 hour student support (Emergency Contact)
- Certificate (Students' pic with certificate)

Arrivals Terminal 2



“When I started my course, I couldn't say anything in English! But at the end of my course, I felt confident enough to speak to everybody!”

TRACK YOUR PROGRESS

12 WEEKS	12 WEEKS	12 WEEKS	12 WEEKS	12 WEEKS	12 WEEKS	
ELEMENTARY	PRE-INTERMEDIATE (CEFR A1)	INTERMEDIATE (CEFR B1)	INTERMEDIATE PLUS (CEFR B2)	UPPER-INTERMEDIATE (CEFR B2)	ADVANCED (CEFR C1)	PROFICIENCY (CEFR C2)
You can interact in a simple way provided the other person talks slowly and clearly and is prepared to help. You can understand and use familiar everyday expressions and very basic phrases.	You can communicate in a simple way on familiar and routine matters. You can describe in simple terms aspects of your background, immediate environment and matters in areas of immediate need.	You can understand the main points of clear standard input on familiar matters regularly encountered in work, school, leisure, and other everyday situations. You can deal with most situations likely to arise where the language is spoken.	You can understand extended speech and follow even complex lines of argument, provided the topic is reasonably familiar. You can interact with a degree of fluency and spontaneity which makes regular interaction with native speakers quite possible. You can present clear, detailed descriptions on a wide range of subjects related to your field of interest. You can write clear, detailed text on a wide range of	You can interact with a degree of fluency and spontaneity that makes regular interaction with native speakers possible without any significant difficulties.	You can express ideas fluently and spontaneously and you can use language flexibly and effectively for social, academic and professional purposes.	At this level you have full understanding of the language and its use. In our proficiency class you will get the chance to get an in depth understanding of the language and and bring your level of English to a near native proficiency.
↓	↓	↓	↓	↓	↓	↓
TIE	IELTS 35-45	IELTS 45-60	IELTS 45-60	IELTS 60-80	IELTS 60-80	IELTS 80-90
CAMBRIDGE KET (KEY ENGLISH TEST)	TIE	TIE	TIE	TIE	TIE	TIE
	CAMBRIDGE A2 KEY (KET)	CAMBRIDGE B1 PRELIMINARY (PET)	CAMBRIDGE B1 PRELIMINARY (PET)	CAMBRIDGE B2 FIRST (FCE)	CAMBRIDGE C1 ADVANCED (CAE)	CAMBRIDGE C2 PROFICIENCY (CPE)



COURSE 1

GENERAL ENGLISH



GENERAL ENGLISH 15 AND 30 (GE15 AND GE30)

With the main focus on communication skills, this 15-hour per week course also provides a solid foundation in conversation and the main linguistic skills such as reading, writing, listening and speaking. There is a core course book and workbook, which are supplemented by teachers with authentic materials such as newspapers, magazines, menus, manuals, brochures and a range of other sources.

LEVELS: A1 - C2 TIMETABLE:

MORNING GE 15. FROM 09:00 AM – 12:15 PM

AFTERNOON GE 15. FROM 1:45 PM – 5:00 PM

HOURS PER WEEK : 15

KEY POINTS:

- SUITABLE FOR STUDENTS WHO WISH TO IMPROVE THEIR ENGLISH IN A LESS INTENSIVE WAY
- GENERAL 'ALL-ROUND' APPROACH
- REVISION OF MAJOR GRAMMAR AND VOCABULARY AT EACH LEVEL
- IN-HOUSE EXAMINATIONS
- MORE TIME FOR OUT-OF-CLASS ACTIVITIES



Entry requirements: Students should have basic knowledge of English (A1 level).



COURSE 2

EXAM PREPARATION

IELTS

The IELTS (International English Language Testing System) exam is an international standardised test of English language proficiency for non- native English language speakers. IELTS is one of the major English- language tests in the world and is the world's most popular English language test for higher education and academic purposes.

CAE

CAE (Cambridge C1 Advanced) also known as the Certificate in Advanced English (CAE), is an international English language examination developed by Cambridge English Language Assessment. It is targeted at Level C1 of the (CEFR) and can be used for study, work and immigration purposes.

Cambridge B2 First

Formerly also known as FCE is an Upper Intermediate level , international English language qualification from Cambridge. This exam focuses on Level B2 of the Common European Framework of Reference for Languages (CEFR).

TIE

Test of Interactive English (TIE) is a QQI and acels accredited exam which tests your reading and writing skills as well as your speaking and listening skills.



ACADEMIC BRIDGE METHODOLOGY

ACADEMIC BRIDGE has developed an innovative and exclusive methodology for adult learners in Ireland, with the aim to supply their necessity of immediate communication in an English speaking country.

Our methodology aims to provide learners with the elements and tools necessary for effective communication, based on real-life experiences and situations. These scenarios are replicated in the classroom by our highly experienced teachers who utilise high-quality coursebooks from the leading ELT industry publishers and supplement them with our own carefully selected materials.





WWW.ACADEMICBRIDGE.IE



/academicbridge



/academicbridge

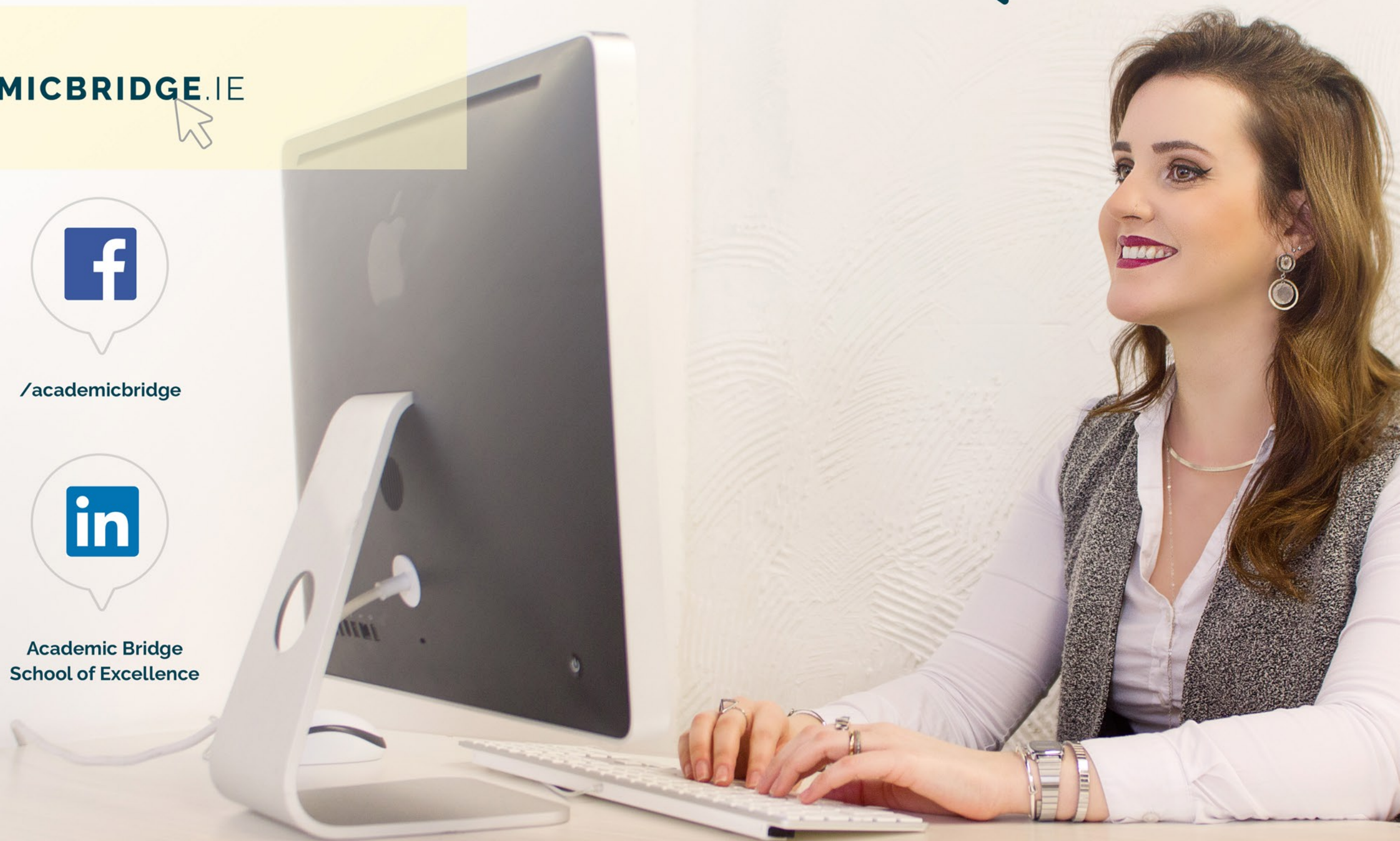


/academicbridge



Academic Bridge
School of Excellence

“Every time I needed support,
Academic Bridge promptly
helped me through their
social media channel.”





ACADEMIC BRIDGE INDUCTION DAY

Academic Bridge has prepared a highly informative booklet, which is very important for those students who are arriving in Ireland for an exchange program. In this booklet you will find all the relevant information regarding the student visa application process, tips for finding accommodation, jobs and how to find your way around using public transport and the benefits of the student card. This is our step-by-step guide to Dublin.





HOW TO APPLY

**E-MAIL**

INFO@ACADEMICBRIDGE.IE

**CALL US**

+353 1 878 8616

**VISIT OUR SCHOOL**

33 GARDINER PLACE,
DUBLIN 1, DUBLIN
IRELAND

11 HARCOURT STREET ,
DUBLIN 2 , DUBLIN
IRELAND

**CONTACT YOUR LOCAL AGENT****CONTACT AB STUDENTS**

 ACADEMIC BRIDGE SUPPORT GROUP



ACCREDITATIONS



• NSAI

Ireland's national standards body that implements internationally recognized standards in order to protect consumers and improve the efficiency of businesses.

• IQNET

Awarded Academic Bridge the ISO 9001:2008 in 2015, a set of educational and management standards recognized worldwide.

A representative body for private colleges in Ireland dedicated to protecting students and raising the standard of education in Ireland.

