

DUBLIN 2017

ENGLISH

for TRAVEL for BUSINESS for LIFE

#academicbridge

Methodology

The best way to have
a consistent learning
experience

Find Out

WHY
ACADEMIC
BRIDGE IS
THE BEST
OPTION TO
STUDY
ENGLISH
IN IRELAND

CONTENTS

- 04 MISSION AND VISION
- 06 LOCATION
- 08 ACADEMIC BRIDGE FACILITIES
- 10 ACCOMMODATION / STUDENT SERVICES
- 12 EXTRA ACTIVITIES
- 14 TRACK YOUR PROGRESS
- 16 GENERAL ENGLISH COURSE
- 18 EXAM PREPARATION / 1:1 CLASSES / 15h / 20h / 30h
- 20 METHODOLOGY
- 22 CONTACT US
- 24 INDUCTION DAY / COURSE START DATE
- 26 HOW TO APPLY / CALENDAR
- 28 ACCREDITATIONS
- 30 STUDENT TESTIMONIALS

AB



WELCOME TO ACADEMIC BRIDGE

Academic Bridge is pleased to welcome you to our English language courses in the heart of Dublin city centre. During your stay with us here in Dublin, we hope that you enjoy yourself and make lots of new friends! But most importantly, that you improve your English.

As part of your course, we recommend that you sign up for our social activities. You will get an opportunity to meet students with different levels of English, learn more about Ireland, and see new places.

We pride ourselves on our service and aim to ensure that your visit here to Ireland is to your satisfaction. However, should you experience any difficulties please do not hesitate to inform us here at the college.



Our **MISSION** is to deliver high-quality English language courses in a friendly, stimulating and supportive atmosphere with qualified and enthusiastic teachers.

VISION As a school we want to become the best and most memorable chain of English schools around the globe. We will do this by providing an unforgettable learning experience for students and deliver the best customer service in the existing market. Students' happiness is our main concern in this company.



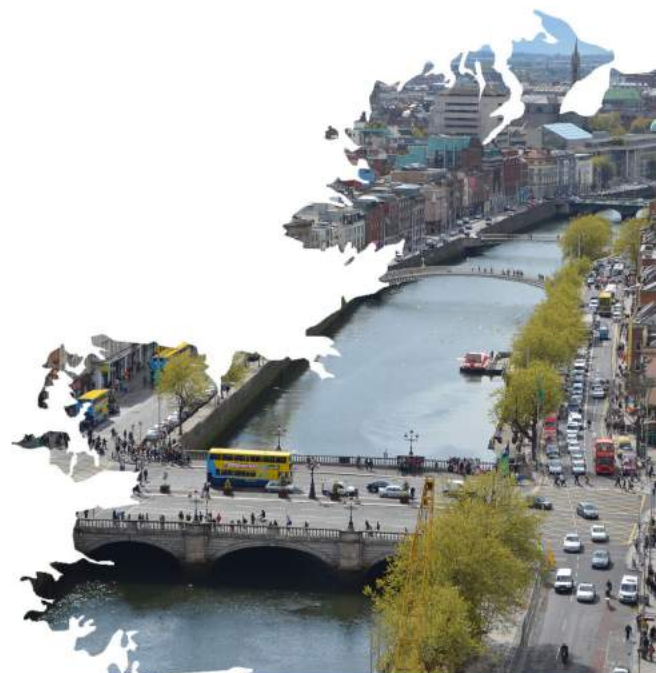


ABOUT IRELAND

Ireland is an island situated in the most westerly point in Europe, sandwiched between the Atlantic Ocean to the west, and the Irish Sea to the east.

The island of Ireland consists of 26 counties of the Republic of Ireland, and 6 counties of Northern Ireland, which is part of the United Kingdom. The Republic and Northern Ireland amount to one continuous landmass.

The Irish language is, the official first language of the state, although the majority of Irish people speak English as their first language. There are still pockets of Irish speaking areas, called Gaeltachts, mainly along the western seaboard and the southwest, but there are still some communities remaining who are monolingual in Irish alone. All road signs and official documents are written in both Irish and English.



ABOUT DUBLIN

Dublin is one of Europe's oldest cities. It is the capital city and largest city in Ireland. As well as retaining its historical and cultural charms, Dublin offers trendy bars, elegant restaurants and stylish, cosmopolitan shops and hotels. So not only have you chosen the best college in which to learn English, you have also chosen the best city.

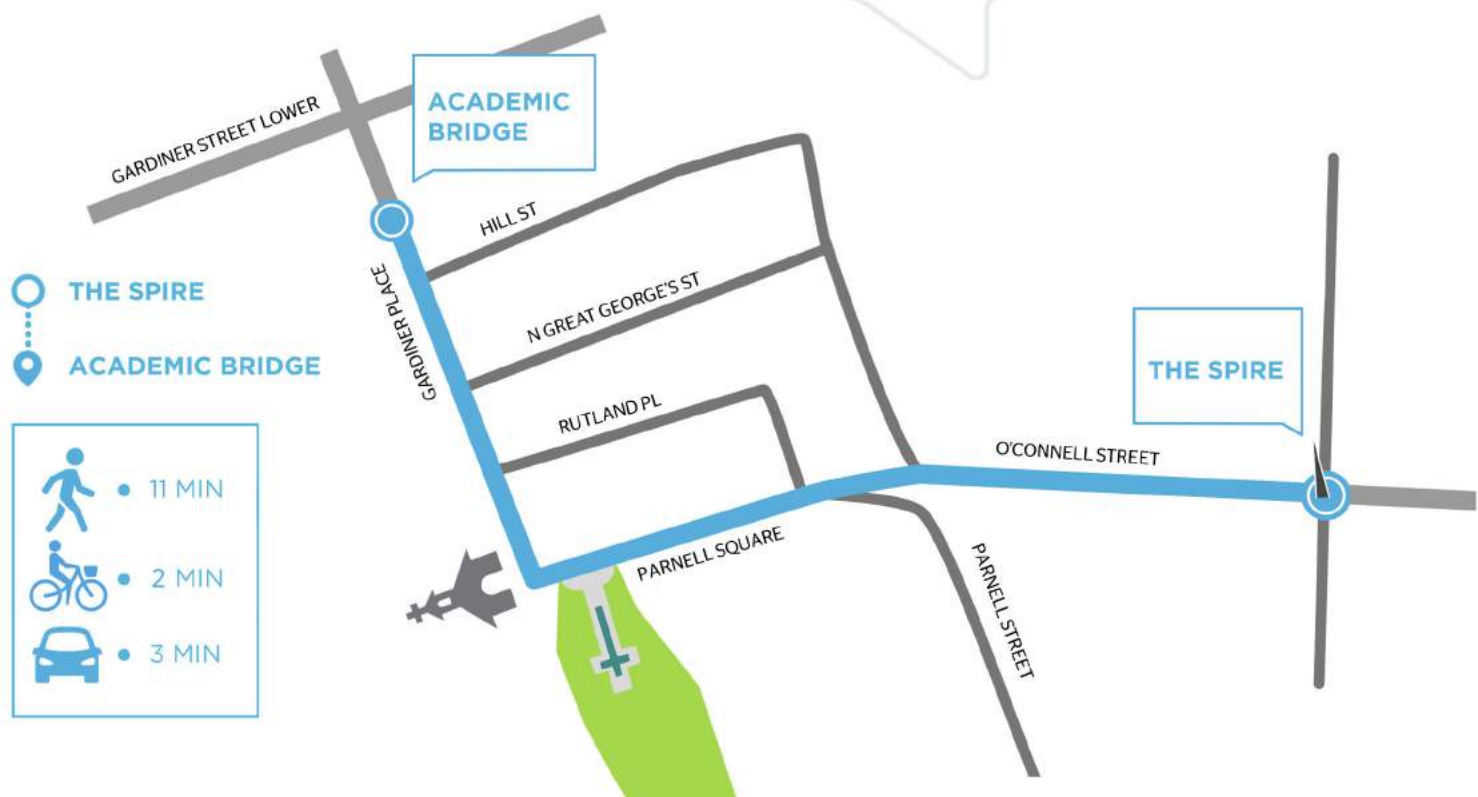




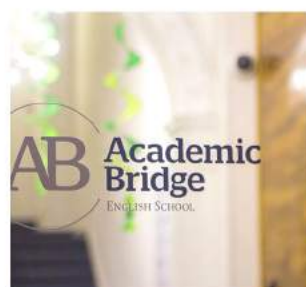
ACADEMIC BRIDGE LOCATION

Academic Bridge is located in an elegant building in one of Dublin's historic areas, a short walk from O'Connell Street, the main street in Dublin city centre. Address:

33 GARDINER PLACE, DUBLIN 1, IRELAND



“With an awesome lounge room, huge back-yard for events and fun classes as always!”





ACADEMIC BRIDGE

FACILITIES

The School has spacious, bright and comfortable classrooms, the building has wi-fi, a reception, a fabulous student lounge and a large open area at the rear of the building.

Our bright classrooms have whiteboards, TVs and audio facilities. Language learning is a dynamic activity and our students have plenty of space in our classrooms to move around and interact with their fellow students while participating in communication games and other learning activities.

- **BRIGHT AND SPACIOUS CLASSROOMS**
- **SELF-ACCESSIBLE LIBRARY (BOOKS + DVDS)**
- **MODERN MULTI-MEDIA COMPUTER SUITE WITH FREE INTERNET ACCESS**
- **FREE WI-FI**
- **CANTEEN**
- **FREE CLUBS INCLUDING DRAMA, MUSIC, MOVIES, IRISH CULTURE AND VIDEO PRODUCTION**
- **QUIET STUDENT AREA TO STUDY**
- **LARGE GARDEN FOR PARTIES AND OUTDOOR ACTIVITIES.**





ACCOMMODATION

• ACCOMMODATION OPTIONS

With this option you will have the comfort and friendly atmosphere of a host family as well as fun and independence similar to a hostel. You can cook your own food or have someone prepare it for you.

• HOST FAMILY

Traditional accommodation for a student. You live in a host family's home and have the chance to see how other people live. All homestay accommodation is full board. This is best for you if you don't want to cook and is a wonderful opportunity to practise your English. This is available all year round.

• STUDENT RESIDENCE

You will have the benefit of living with other people like you, who are studying English. This is the best option for you if you want total immersion in the student experience. Available all year round.

• HOSTEL

We suggest a variety of hostels close to the school. Shared rooms, shared kitchens and a shared TV area make this option a good social place to stay. This is best for you if you want to mix with lots of different nationalities. Available all year round.



STUDENT SERVICES

- Social activities
- Internship programme
- Airport pickup
- Health insurance
- 24 hour student support (Emergency Contact)
- Certificate (Students' pic with certificate)

Eilinn Isteach Cricchfort
Arrivals Terminal 2





EXTRA ACTIVITIES

Here in **Academic Bridge** we run a variety of extra social and academic activities every week. These include:



**EXTRA
LANGUAGE
CLASSES:**
*like Spanish
and Portuguese.*

**WEEKEND TRIPS
ACROSS IRELAND:**
*visit Ireland's many
historical and cultural
centres, such as Mayo or
Wicklow, or travel to
Northern Ireland
to see Belfast and
the Giant's Causeway.*



**CONVERSATION
CLASS:**
*meet other students in
a friendly and informal
environment. Improve
your speaking and
make new friends at
the same time.*

**EXAM
PREPARATION:**
*get ready for IELTS
with our intensive
preparation course.
Get the grade
you need.*





YOGA CLASS



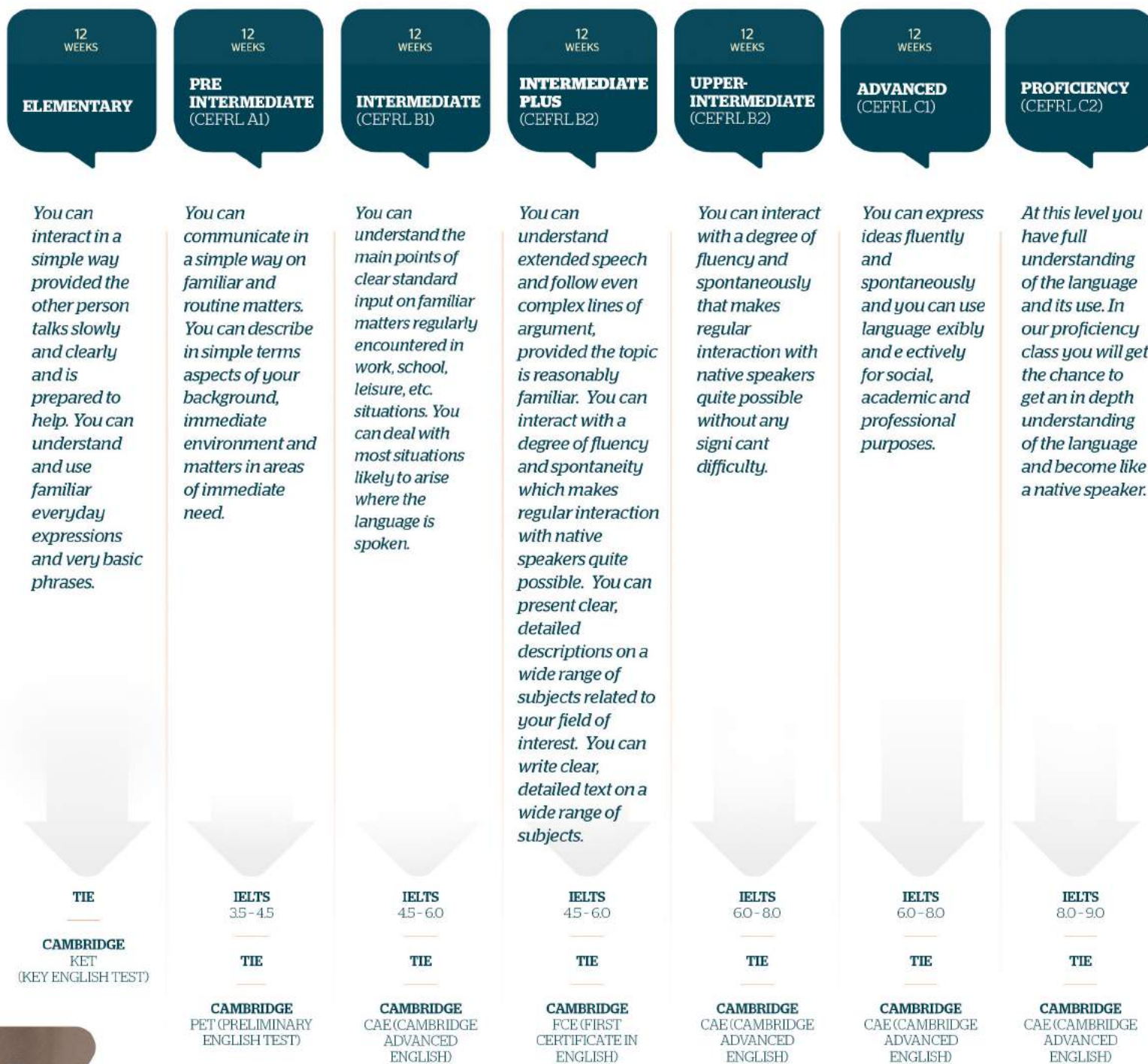
HANDBALL TEAM



“When I started my course,
I couldn't say anything
in English! But at the
end of my course, I could
speak to everybody.”



TRACK YOUR PROGRESS



COURSE 1

GENERAL ENGLISH



GENERAL ENGLISH 15 AND 30 (GE15 AND GE30)

With the main focus on communication skills, this 15-hour per week course also provides a solid foundation in conversation and the main linguistic skills such as reading, writing, listening and speaking. There is a core course book and workbook, which are supplemented by teachers with authentic materials such as newspapers, magazines, menus, manuals, brochures and a range of other sources. In the GE 30 students take classes in the morning and afternoon.

LEVELS: A1 - C1 TIMETABLE:

MORNING GE 15. FROM 09:00 AM - 12:15 PM

AFTERNOON GE 15. FROM 1:00 PM - 4:15 PM

HOURS PER WEEK: 15

MORNING + AFTERNOON GE 30.

FROM 09:00 AM - 4:15 PM.

HOURS PER WEEK: 30

DURATION: 1 - 25 WEEKS

KEY POINTS:

- SUITABLE FOR ANY STUDENT WHO WISHES TO IMPROVE THEIR ENGLISH IN A LESS INTENSIVE WAY
 - GENERAL 'ALL-ROUND' APPROACH
 - REVISION OF MAJOR GRAMMAR AND VOCABULARY AT EACH LEVEL
 - IN-HOUSE EXAMINATIONS
 - MORE TIME FOR OUT-OF-CLASS ACTIVITIES
- AWARD: ACADEMIC BRIDGE
CERTIFICATE IN ENGLISH



Entry requirements: Students should have a basic knowledge of English (A1 level). Those who are complete beginners will have to enter a one-to-one programme until A1 level is achieved.





COURSE 2 EXAM PREPARATION

IELTS

The IELTS (International English Language Testing System) exam is an international standardised test of English language proficiency for non- native English language speakers. IELTS is one of the major English- language tests in the world and is the world's most popular English language test for higher education and academic purposes.

CAE

CAE (Cambridge English: Advanced) also known as the Certificate in Advanced English (CAE), is an international English language examination developed by Cambridge English Language Assessment. It is targeted at Level C1 of the (CEFR) and can be used for study, work and immigration purposes.

FCE

FCE (First Certificate in English) is an upper-intermediate, international English language qualification from Cambridge. This exam focuses on Level B2 of the Common European Framework of Reference for Languages (CEFR).

TIE

Test of Interactive English (TIE) is a QQI and acels accredited exam which tests your reading and writing skills as well as your speaking and listening skills.



COURSE 3 1:1 **1:1 CLASSES**

These classes are designed for students who wish to have intensive or individual tuition.

The lessons are tailor-made to suit the needs and interests of the students.



15 **COURSE 4** HOURS

Choose this option if your goal is to be able to visit an English speaking country and recognize basic words and phrases, or if you need to refresh your current knowledge.

20 **COURSE 5** HOURS

Choose this option if you need the 15 hours of General English as well as 5 hours of exam preparation.

30 **COURSE 6** HOURS

Choose this option not only to refresh but also to expand your current knowledge, focusing on strengthening your weaknesses.

ACADEMIC BRIDGE

METHODOLOGY

AB



ACADEMIC BRIDGE has developed an innovative and exclusive methodology for adult learners in Ireland, with the aim to supply their necessity of immediate communication in an English speaking country.

*The methodology aim is to provide the elements and tools that enables learners to communicate in classroom, based on real life experiences and situations that are created by our native teachers and portrayed by our special source books, which have been carefully selected and designed by **OXFORD UNIVERSITY PRESS**.*







WWW.**ACADEMICBRIDGE**.IE



/academicbridge



/academicbridge



/academicbridge



@abcollegedublin



Academic Bridge
School of Excellence

“Every time I needed support,
Academic Bridge promptly
helped me through their
social media channel.”







ACADEMIC BRIDGE

INDUCTION DAY

Academic Bridge has prepared a highly informative booklet, which is very important for those students who are arriving in Ireland for an exchange program. In this booklet you will find all kinds of information regarding necessary documents for you to apply for your student visa, how to rent a place to stay, how to Find a job, how to get a discount in the local shops and much more. All OF THIS information is explained in an easy way. This is our step-by-step guide to Dublin.







E-MAIL
INFO@ACADEMICBRIDGE.IE



CALL US
+353 1 878 8616



VISIT OUR SCHOOL
**33 GARDINER PLACE,
DUBLIN 1, IRELAND**



CONTACT YOUR LOCAL AGENT



CONTACT AB STUDENTS



ACADEMIC BRIDGE SUPPORT GROUP



GUESTS
PRIVATE
CAR
PARK

AB Academic
Bridge

AB Academic
Bridge

AB Academic
Bridge
Enabling Success
Opening Times:
Mon to Fri - 9:00 to 5:00
Sat - 10:00 to 4:00
Sun - 10:00 to 4:00
info@abcollege.ie
01 875 8000
www.abcollege.ie



ACCREDITATIONS



• NSAI

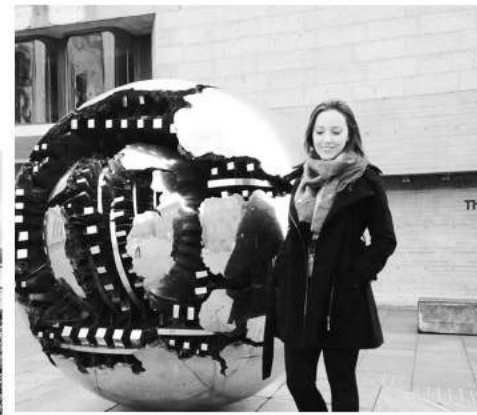
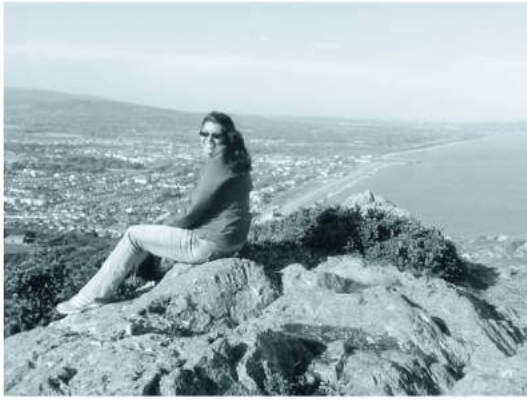
Ireland's national standards body, they implement internationally recognized standards in order to protect consumers and improve the efficiency of businesses.

• IQNET

Awarded Academic Bridge the ISO 9001:2008 in 2015, a set of educational and management standards recognized worldwide.

• PRIVATE COLLEGE NETWORK

A representative body for private colleges in Ireland. Dedicated to protecting students and raising the standard of education in Ireland.



“ Academic Bridge is one of the best things that had happened to me, I enjoyed every moment I had here. AB College has good teachers, good staff and good enviroment. If you are coming to Dublin to study, you should come here, you won't regret it. ”

Francisco Joel Manjarrez - Mexico





“ 힘든 유학생 생활에 정말 많은 도움을 준 ABCOLLEGE 에 항상 감사합니다. 영어 수업 뿐만 아니라 수많은 활동과 이벤트로 많은 경험 그리고 정보도 알수있었고 서로 다른 나라끼리 문화 체험도 할수 있어서 너무 좋았습니다. ”

Jongtae Han - South Korea



“ The building is nice, in a nice location right in the heart of Dublin. The support when you get to Dublin is the BEST one and the teachers are extremely qualified and down to earth. ”

Lion Ol - Brazil



WWW.ACADEMICBRIDGE.IE



33 GARDINER PLACE
DUBLIN 1 • IRELAND
info@academicbridge.ie

+353 1 878 8616

